



# EARLY DATA FROM PHYSICAL IMPACT SURVEY

*These results are from a sample of approximately 100 adult Chiari patients. The findings have not been published or peer-reviewed.*

**62% scored less than 50% on the Balance Confidence Scale which equates to a 'Low Level of Physical Function'**



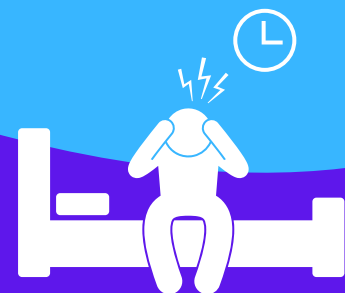
**Only 16% scored at a 'High Level of Physical Function' on the same scale**

**43% have Moderate-Severe Disability of the upper body**



**84% scored above the clinical cut-off for kinesiophobia which is the fear of pain or injury caused by movement**

**91% were rated as having 'Poor Sleep Quality'**



[www.conquerchiari.org](http://www.conquerchiari.org)