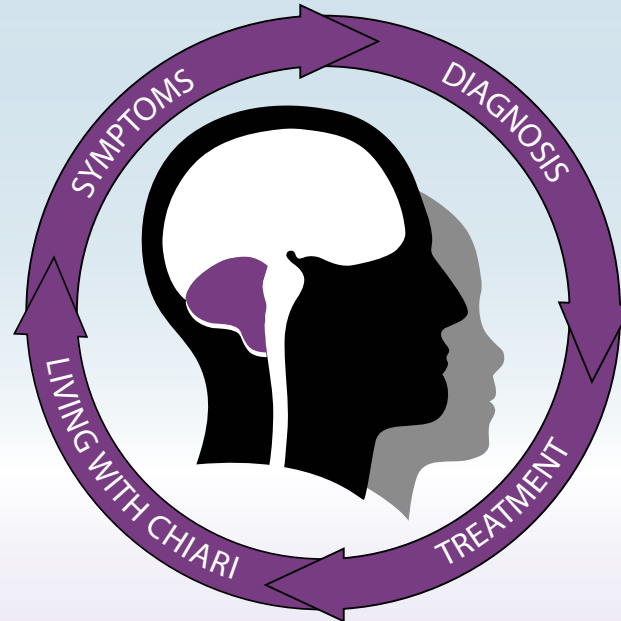


Chiari Malformation: An Overview



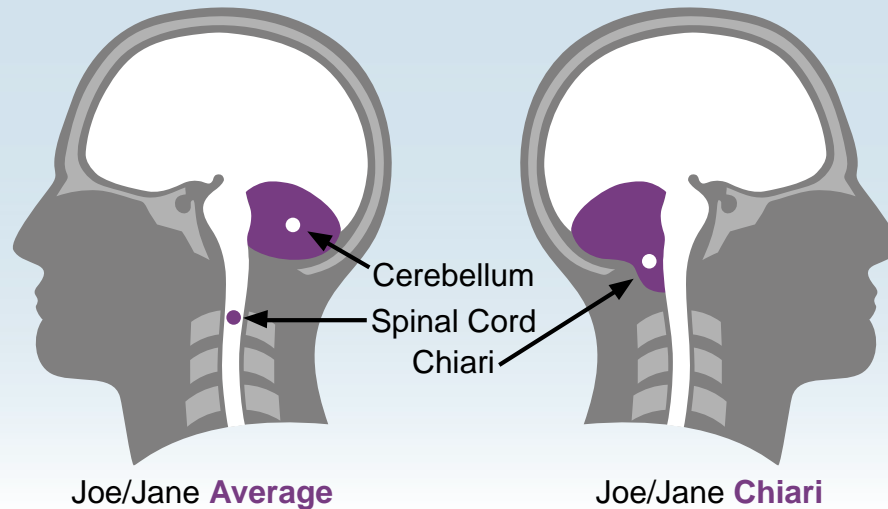
Rick Labuda, Executive Director

director@conquerchiari.org

724-940-0116

Disclaimer: This presentation is intended for informational purposes only and may or may not apply to you. The editor and publisher are not doctors and are not engaged in providing medical advice. Always consult a qualified professional for medical care. This publication does not endorse any doctors, procedures, or products.

What Is Chiari Malformation?



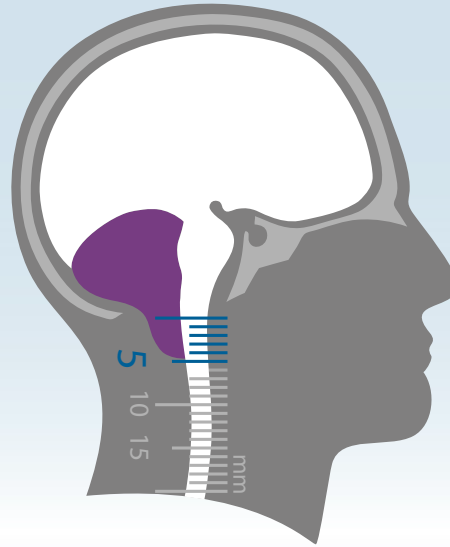
Chiari Malformation (Arnold-Chiari) - is a serious neurological disorder where the bottom part of the brain, the cerebellum, descends out of the skull and crowds the spinal cord, putting pressure on both the brain and spine causing many symptoms.

- First identified by Hans Chiari in the 1890's
- Several types, Type I is shown above; Type II is associated with Spina Bifida
- Also known as: Chiari Malformation (CM), Arnold-Chiari Malformation (ACM), tonsillar herniation, tonsillar ectopia, hindbrain herniation

Chiari affects everyone differently!!

Evolving Definition

Old Definition



- Chiari malformation is traditionally defined as the cerebellar tonsils being located 3mm-5mm **or more** below the foramen magnum (opening at the bottom of the skull) as measured on an MRI.
- However, research has shown that the size of a herniation is **NOT** strongly related to how severe symptoms are or how people respond to treatment.

Some people have large herniations with no symptoms; while others have small herniations with severe symptoms

Evolving Definition

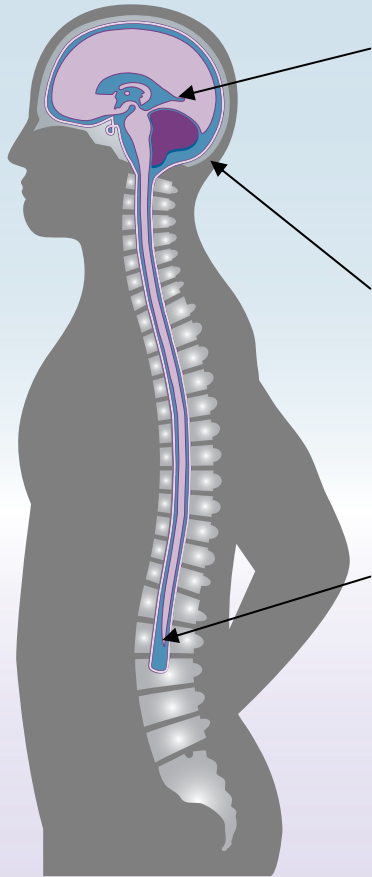
**New
Definition?**



- Researchers are looking for a new way to measure Chiari severity
- Focus areas include advanced MRI and engineering techniques to quantify cerebrospinal fluid (CSF) flow, crowding and compliance
- Some preliminary results are encouraging, but it will take time to develop

Conquer Chiari is funding research to develop a quantitative, objective test of symptomatic Chiari

What Causes Chiari?



Cerebrospinal Fluid Issues

Altered CSF dynamics “push” brain out of skull. For example, hydrocephalus, intracranial hypertension.

Small Posterior Fossa

Back of the skull is too small for the normal sized brain. May be most common.

Tethered Cord (very controversial)

Abnormal anchoring of the spinal cord at the base leads to herniation, also causes symptoms of its own.

Other Causes:

- Acquired due to a mass in the brain
- Spina Bifida (Chiari II)
- Genetic conditions such as an Ehlers-Danlos variant
- Incidental; found when an MRI is done for a different reason, such as an accident

It is believed Chiari can be due to several things. However these are only theories and exact mechanisms are not understood. It is not known how common each type may be.

Common Questions

How many people have Chiari?

Chiari is more common than many people think. Conquer Chiari estimates that 1 in 1,000 people have Chiari, which translates to 300,000 people in the US alone. According to the American Association of Neurological Surgeons, there are over 10,000 Chiari surgeries each year.

Who gets Chiari?

It is generally believed that Chiari affects people of all races. There are some indications that it affects more women than men. Symptoms can develop at any age, but people are usually diagnosed as children or as adults in their late 20's or early 30's.

Common Questions – cont'd

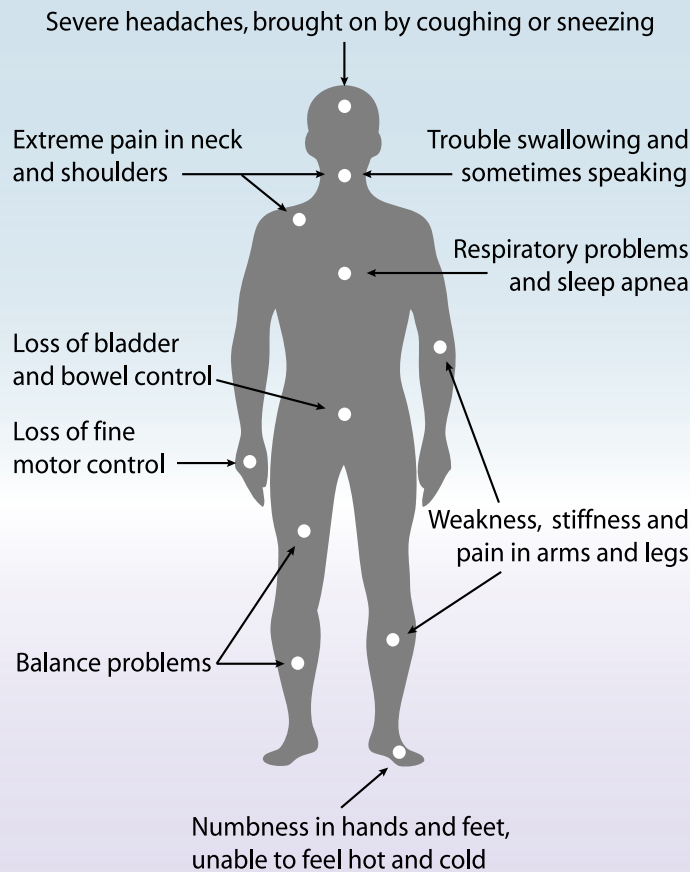
Is Chiari genetic?

Research has identified more than 100 families with multiple affected members, implying that at least some cases are genetic in origin. However, it is not known what percent of cases are, and what genes are involved. There is no genetic test for Chiari.

Is Chiari fatal?

In general Chiari 1 is not considered fatal. However, there are case reports of sudden death associated with Chiari 1 due to breathing problems, although this is likely very uncommon. Also, the impact that long-term symptoms may have on life expectancy has not been studied. Finally, severe cases of Chiari II in infants and children can be fatal.

Symptoms



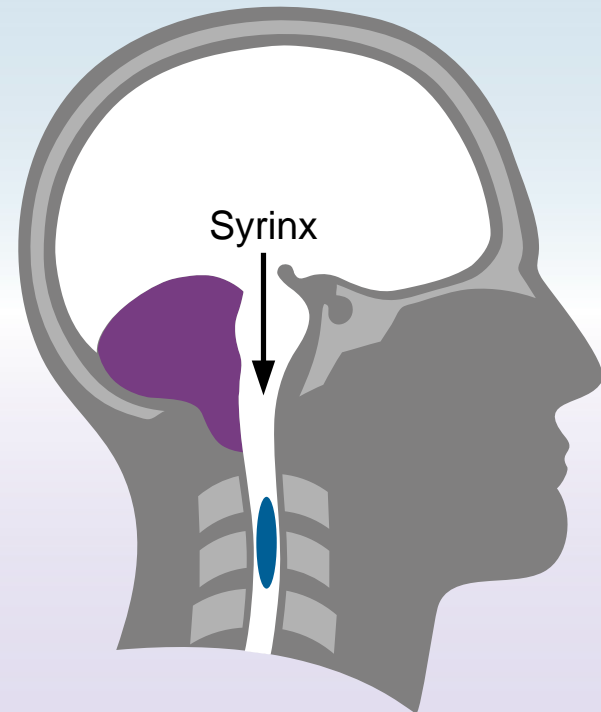
- Signature symptom is a severe headache in the back of the head brought on by straining, coughing, etc.
- It is not known why, but symptoms can develop at any age
- Trauma may play a role in sparking symptoms
- Symptoms are due to compression of brain and spinal tissue, disruption of the natural flow cerebrospinal fluid, and increased pressure in the brain
- Some people with malformations are asymptomatic, meaning they have no symptoms
- The cognitive effects of Chiari are being researched, but are not well understood

Chiari symptoms can range from mild, to severe, to completely debilitating

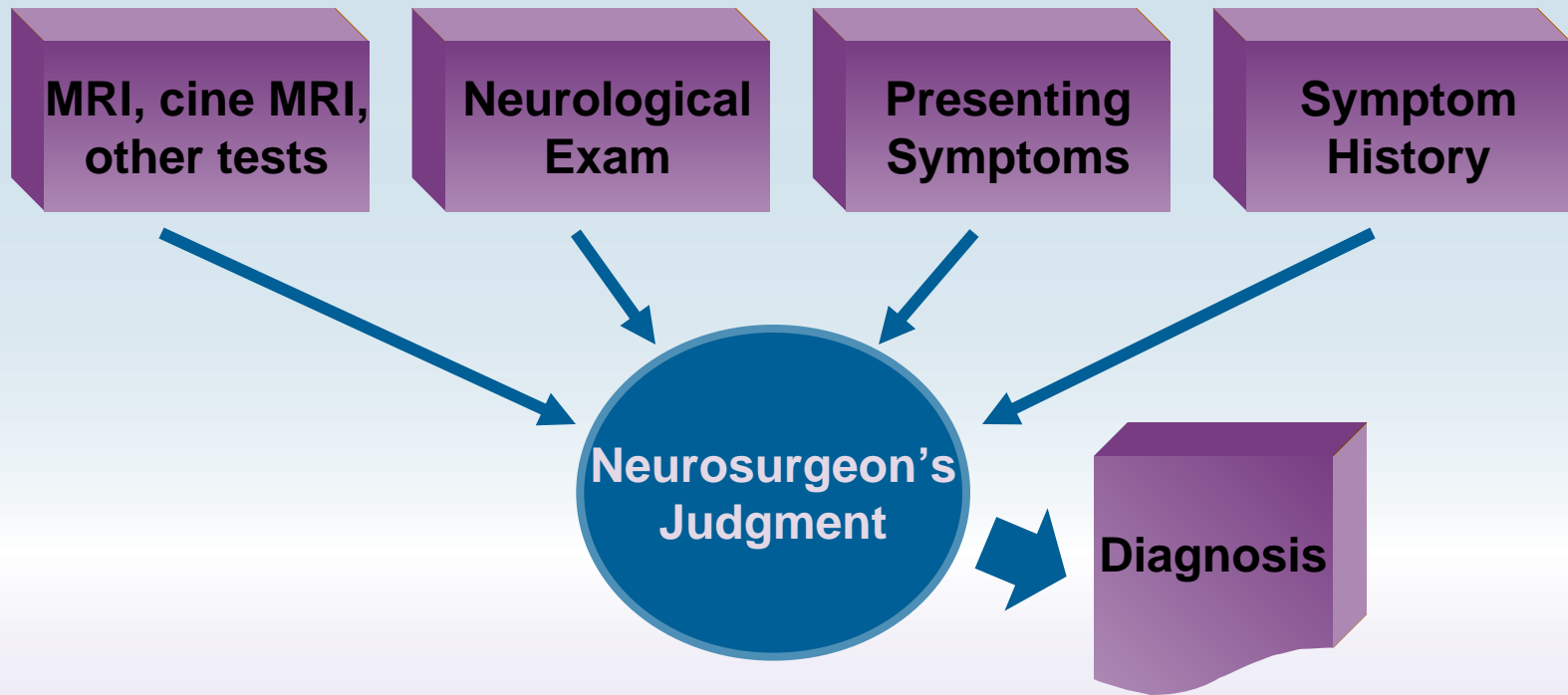
Syringomyelia

Up to 50% of Chiari patients also develop syringomyelia (SM):

- Neurological condition where a fluid filled cyst, or **syrinx**, forms in the spinal cord
- The syrinx expands the spinal cord, sometimes to more than twice its normal diameter, and stretches the nerve tissue paper thin
- Exactly how Chiari causes a syrinx is not completely understood
 - Likely due to disruption of the natural flow of cerebrospinal fluid (CSF) between the brain and spinal cord
- Can cause permanent nerve damage and paralysis
- Other symptoms include neuropathic pain, loss of sensation, muscle weakness, and bladder/bowel problems



Diagnosis



- There is no single, objective, definitive test for symptomatic Chiari
- Diagnosis is based on a combination of factors and is an informed opinion on whether symptoms are due to herniated cerebellar tonsils
- Chiari is often missed and mis-diagnosed as other diseases

It can take years, and many doctors, for a patient to get an accurate diagnosis

Treatment

- Only treatment which addresses underlying problem is surgery
- Treatment decision is based on whether symptoms are clearly due to Chiari and bad enough to warrant surgery
- No objective test or criteria to say when a patient should have surgery
- Alternative is to monitor situation and treat individual symptoms (Wait & See)
- Since surgery is the primary treatment option, most patients see a neurosurgeon for treatment opinions

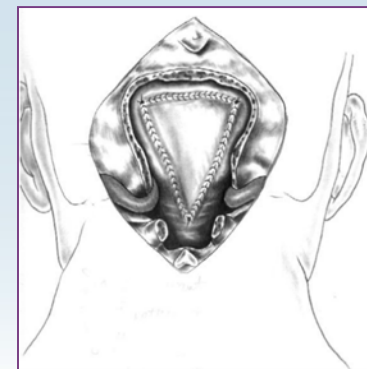
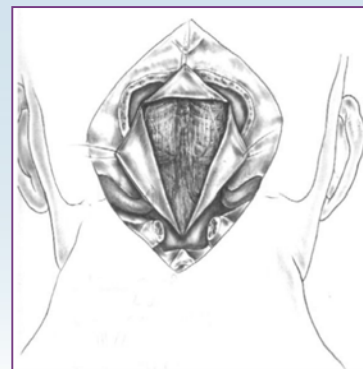
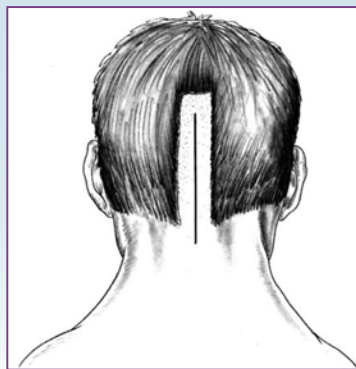
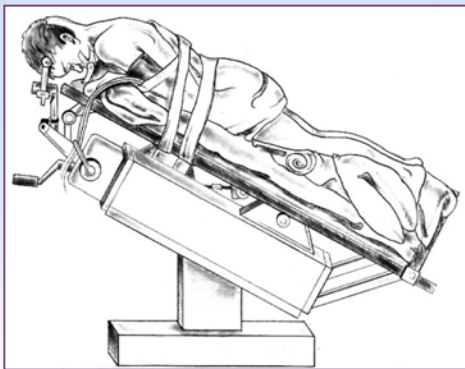
A 2004 survey of neurosurgeons (Schjiman) found a wide range of thinking on when to operate for Chiari.

Case #	Symptoms/Diagnosis	% Would Operate
1	7 yr old with no symptoms 12 mm tonsils- <u>no</u> syrinx	8
1A	w/ 2mm wide syrinx	28
1B	w/ 8mm wide syrinx	75
2	9 yr old with headaches 10 mm tonsils- <u>no</u> syrinx	46
2A	w/ 2mm wide syrinx	64
2B	w/ 8mm wide syrinx	90
3	11 yr old w/progressive scoliosis 12 mm tonsils- <u>no</u> syrinx	58
3A	w/ small syrinx	85
3B	w/ 6mm wide syrinx	97

It is common for patients to receive different opinions from different neurosurgeons

Surgical Procedure

*The goal of posterior fossa decompression is to create more room around the malformation and restore the flow of spinal fluid. **There are many variations:***



** Images courtesy of Dr. Ghassan Bejjani*

Surgical Steps

- Craniectomy- A piece of the skull is removed
- Laminectomy- Part of one or more vertebrae are removed
- Duraplasty- The covering of the brain is opened and a patch is sewn in to make it bigger
- Tissue removal- Cerebellar tonsils are sometimes cauterized (*controversial*)
- Plate insertion- Mesh is inserted where skull was removed

Surgical Variations/Controversies

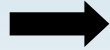
- How much bone is removed
- Whether the dura is opened at all
- What type of material is used for a dural graft (patch)
- Whether any brain tissue is removed
- Whether a mesh is put in to take the place of the removed piece of skull

Surgery - The Experience

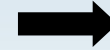
Every case is unique, but a typical experience might be:



Surgery: ~ 4 hrs.



ICU: One night



Hospital: 3-4 days



Normal Activity: Variable



Rest at home: 3 wks to 3 mos



Surgical Outcomes

Excellent

30-40%

*Symptom Free
No Limitations*

Good

30-40%

*Some Improvement
Varying Limitations*

Poor

10-20%

*No Improvement
Significant Limitations*

- Factors that may affect outcomes include: age, syringomyelia, bony abnormalities, scoliosis, duration of symptoms, and concurrent conditions.
- Common residual symptoms include pain, muscle weakness, and loss of sensation; patients will adapt their lifestyle accordingly.
- Symptoms may fluctuate over time; patients report that trauma can cause symptoms to come back.
- Patients in the poor range (10-20%) may end up getting revisions or other surgeries.
- Over the very long term (10 years+), symptom recurrence has been reported, but has not been studied extensively.

Published outcomes research has many limitations, such as poorly defined measures and short durations. Patient should discuss their individual case with their surgeon to establish expectations before surgery.

Why Do Surgeries Fail?

Surgery can fail for a number of reasons

Surgery Related

Inadequate decompression

- not enough bone removed
- dura was not opened

Recurrent obstruction

- scarring disrupts CSF flow
- bone regrowth in children
- spinal cord retethers

Surgical complications

Altered CSF dynamics

Cervical instability

Patient Related

Concurrent conditions still cause symptoms

- pseudotumor cerebri; elevated pressure in the brain
- basilar invagination; compression of the brainstem from the spine
- genetic disorders

Symptoms not due to Chiari

- symptoms were due to something else

It is important to try to understand the reason for failure before undergoing additional treatment, but sometimes a revision surgery will be necessary.

State of Research

KNOWN

- Affects >300,000 in the US
- Surgery helps most people
- Can cause syringomyelia
- Affects everyone differently

QUESTIONS

- How to identify candidates for surgery?
- Is there an ideal surgical technique?
- What role do genetics play, and what genes?
- Why do people become symptomatic?

SUSPECTED

- Several distinct sub-groups/causes
- Children have better outcomes than adults
- CSF dynamics play a role

CONTROVERSIES

- The relationship between tethered cord and Chiari
- If children should be restricted from physical activity before and/or after surgery
- If brain tissue should be removed during surgery

Conquer Chiari funds research grants and organizes research conferences to advance our understanding of Chiari and improve experiences and outcomes

Three Keys To Understanding Chiari



Each person's Chiari experience is unique

It is impossible for others to completely understand what you are going through; look for validation within yourself



Not every question has an answer

Don't waste time searching for absolutes or a magic bullet



There are two options:
take control or be controlled

Be proactive, educate yourself, and trust your instincts

Conquer Chiari – Learn More

[Research Articles](#) [Personal Stories \(Good & Bad\)](#)

[Research Videos](#) [Handouts](#)

[Conquer Chiari: A Patient's Guide](#)

[Contents Under Pressure](#)

Questions or comments about this presentation can be sent to:

director@conquerchiari.org